

CEO REPORT

JULY 2024



MISSION

The Virginia Railway Express, a joint project of the Northern Virginia Transportation Commission and the Potomac Rappahannock Transportation Commission, will provide safe, cost-effective, accessible, reliable, convenient, and customer responsive commuter-oriented rail passenger service. VRE contributes to the economic vitality of its member jurisdictions as an integral part of a balanced, intermodal regional transportation system.



CEO REPORT | JULY 2024

TABLE OF CONTENTS

PERFORMANCE AT A GLANCE..... 3

ON-TIME PERFORMANCE 4

AVERAGE DAILY RIDERSHIP 6

SUMMONSES ISSUED 7

TRAIN UTILIZATION..... 8

PARKING UTILIZATION 9

FACILITIES UPDATE.....10

UPCOMING PROCUREMENTS11

CAPITAL PROJECTS UPDATES.....12

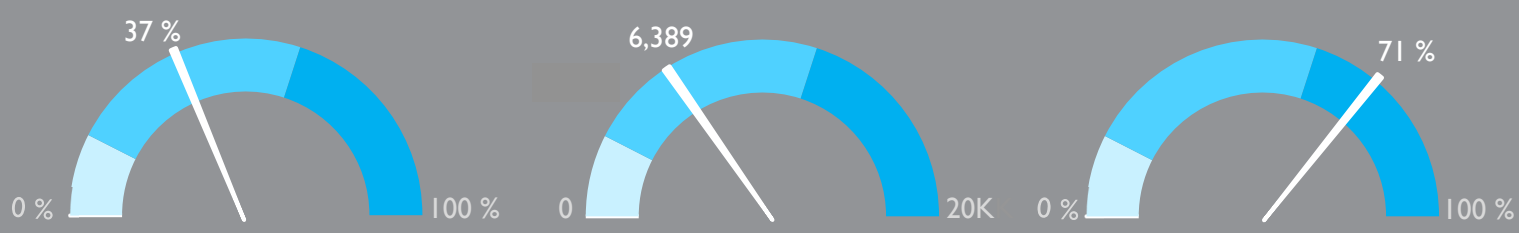
PROJECTS PROGRESS REPORT14



VIRGINIA RAILWAY EXPRESS
A better way. A better life.



PERFORMANCE AT A GLANCE



PARKING UTILIZATION

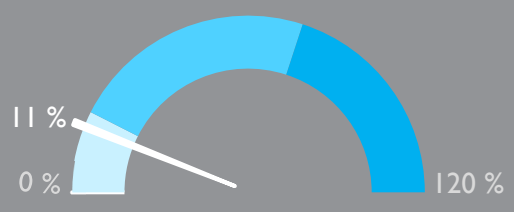
The total number of parking spaces used in the VRE system during the month, divided by the total number of parking spaces available.

AVERAGE DAILY RIDERSHIP

The average number of boardings each operating day inclusive of Amtrak Step-Up boardings and reduced, "S" schedule, service.
Same month, previous year: 6,223

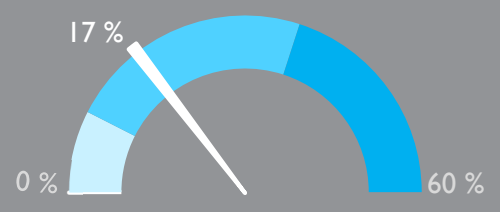
ON-TIME PERFORMANCE

Percent of trains arriving at their destination within 5 minutes of the schedule.
Same month, previous year: 88%



SYSTEM CAPACITY

The percentage of peak hour train seats occupied. The calculation excludes reverse flow and non-peak hour trains.



OPERATING RATIO

Through April 2024

Year-to-date operating revenues divided by year-to-date operating expenses, which represents the share of operating costs paid by the riders.

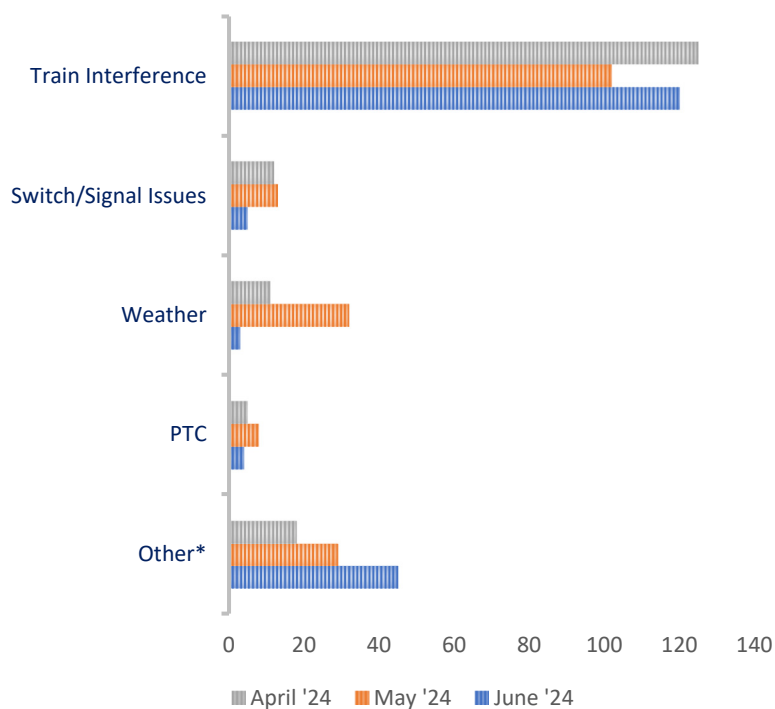
June 2024

ON-TIME PERFORMANCE

OUR RECORD

	June 2024	May 2024	June 2023
Manassas Line	69%	70%	86%
Fredericksburg Line	73%	77%	90%
Systemwide	71%	74%	88%

PRIMARY REASON FOR DELAY



VRE operated 616 trains in June. The on-time rate for the month was 71 percent.

One hundred seventy-seven trains arrived more than 5 minutes late to their final destinations. Of those late trains, 93 were on the Manassas Line (53 percent), and 84 were on the Fredericksburg Line (47 percent). The average delay was 17 minutes. Seventeen trains were more than 30 minutes late to their destination station.

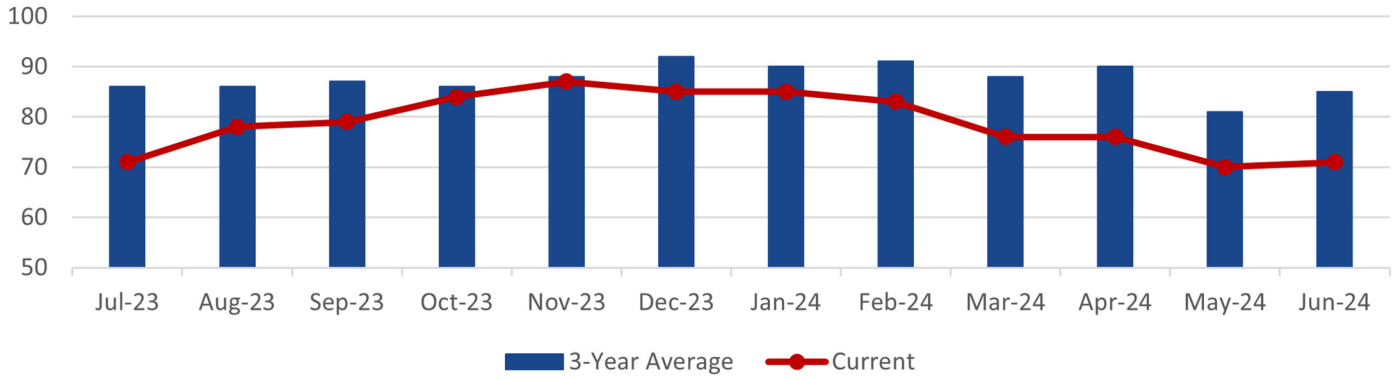
*Includes trains that were delayed due to operational testing and passenger handling.

LATE TRAINS

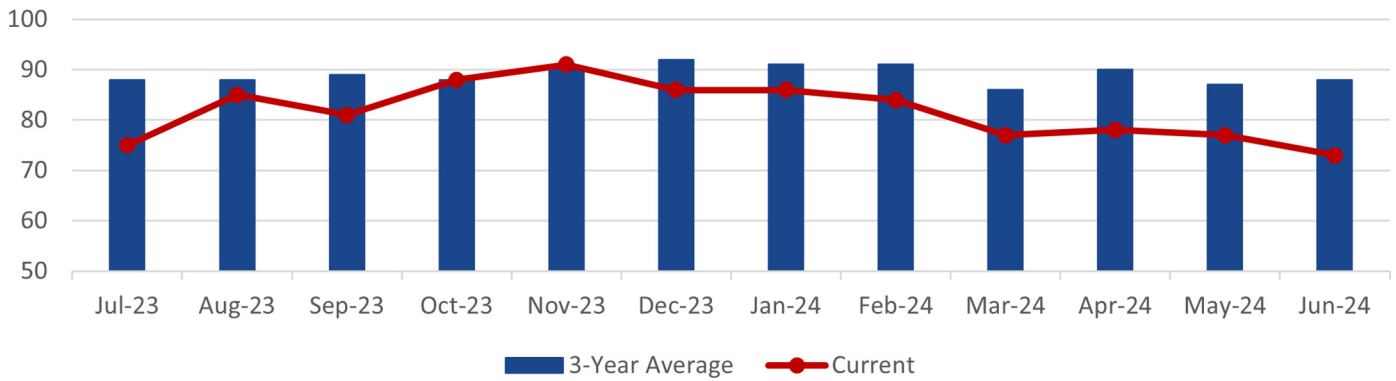
	System Wide			Fredericksburg Line			Manassas Line		
	Apr.	May	June	Apr.	May	June	Apr.	May	June
Total late trains	171	184	177	77	80	84	94	104	93
Average minutes late	14	15	17	15	16	14	14	14	20
Number over 30 minutes	14	13	17	9	6	4	6	7	14
Heat restrictions	2	6	14	2	6	14	2	0	0

ON-TIME PERFORMANCE

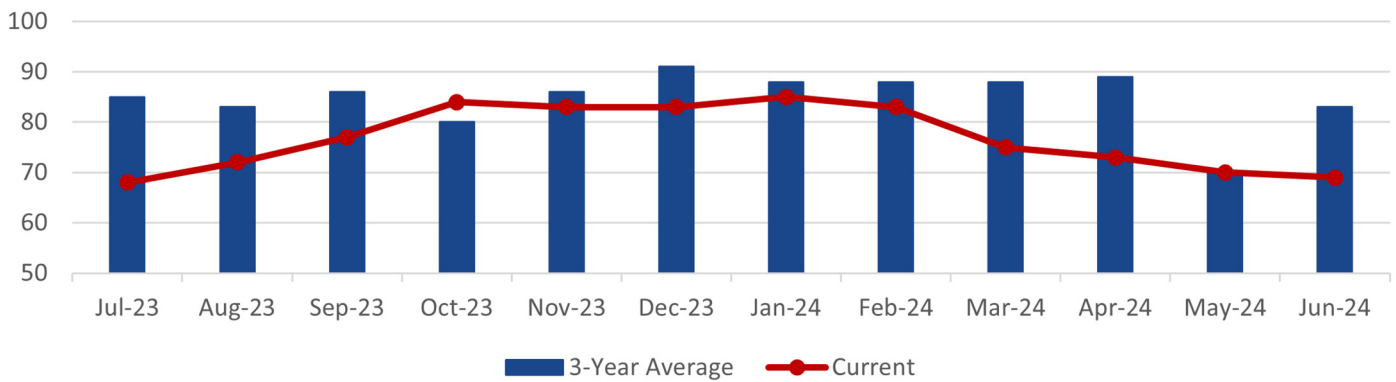
VRE SYSTEM



FREDERICKSBURG LINE

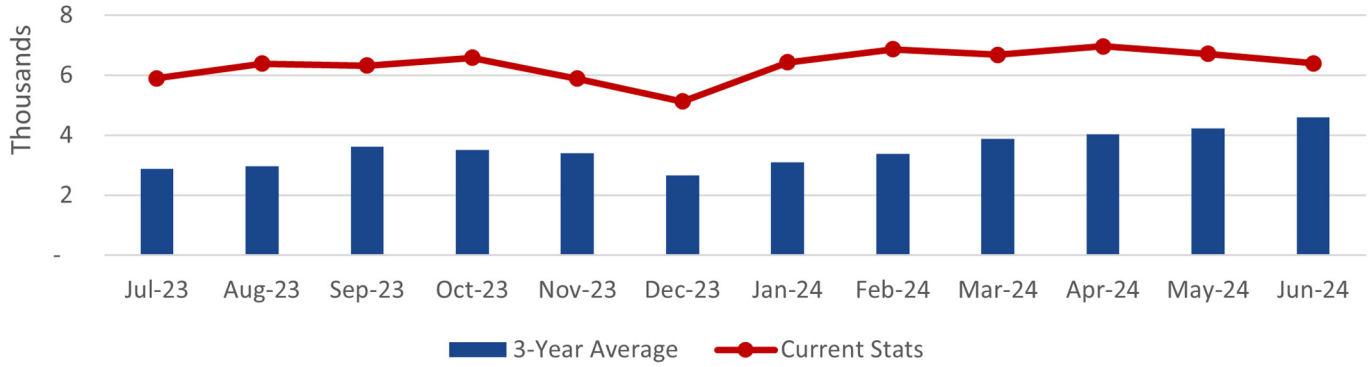


MANASSAS LINE

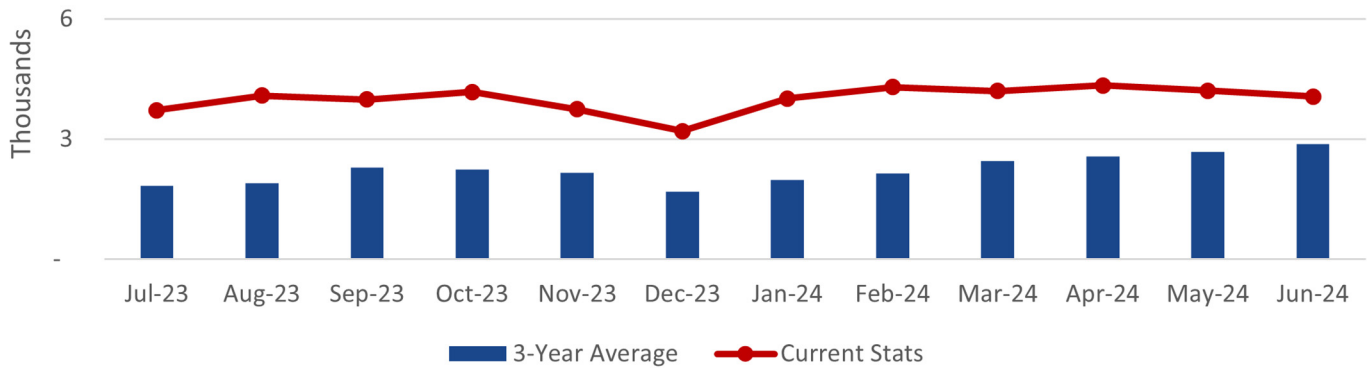


AVERAGE DAILY RIDERSHIP

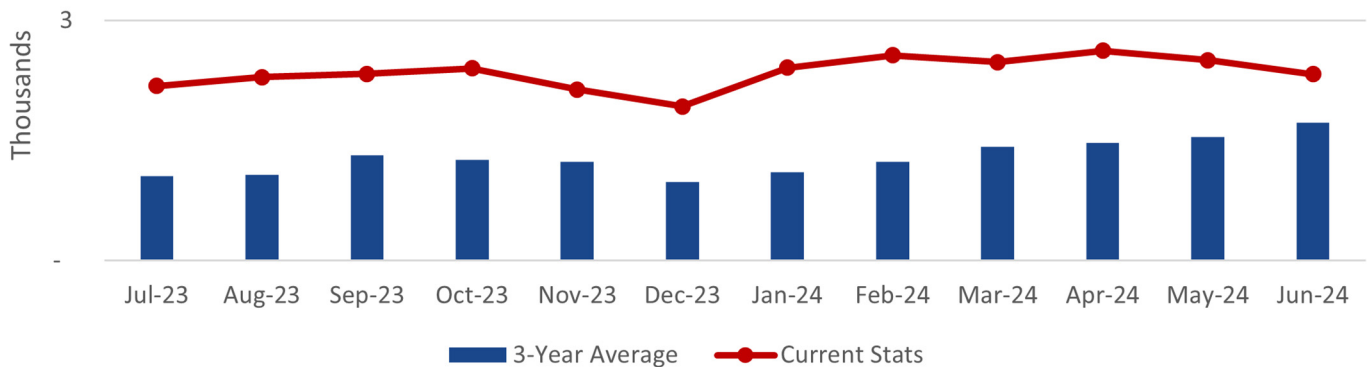
VRE SYSTEM



FREDERICKSBURG LINE



MANASSAS LINE



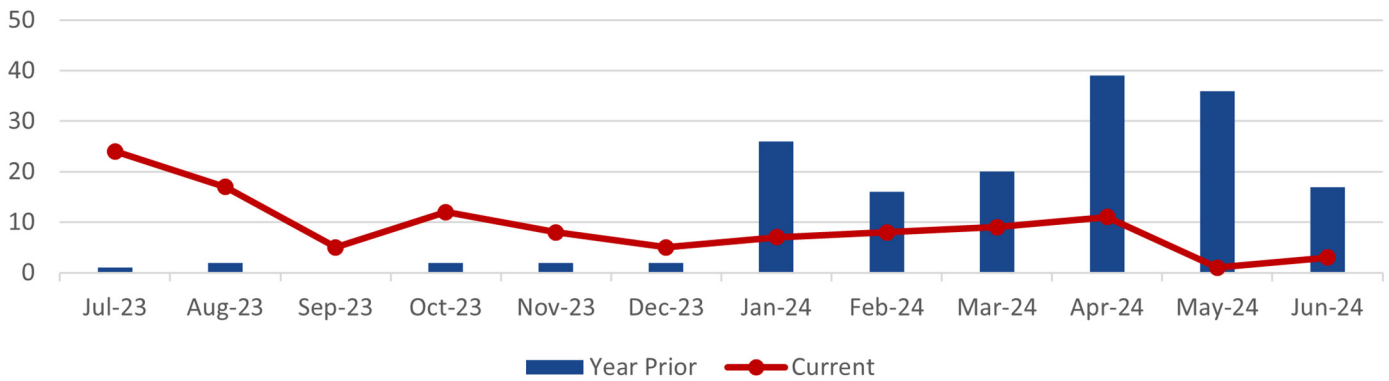
RIDERSHIP UPDATES

Average daily ridership for June was 6,389. There were 20 service days.

	June 2024	May 2024	June 2023
Monthly Ridership	127,770	147,561	136,900
Average Daily Ridership	6,389	6,707	6,223
Bicycles on Trains	1,345	1,467	1,171
Full Service Days	19	22	21
“S” Service Days	1	0	1

SUMMONSES ISSUED

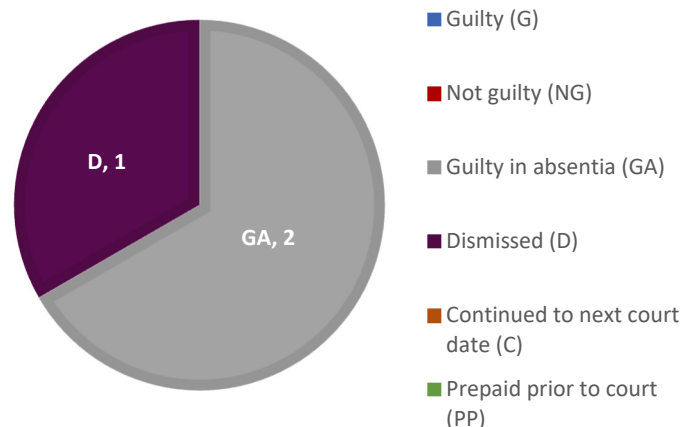
VRE SYSTEM



SUMMONSES WAIVED OUTSIDE OF COURT

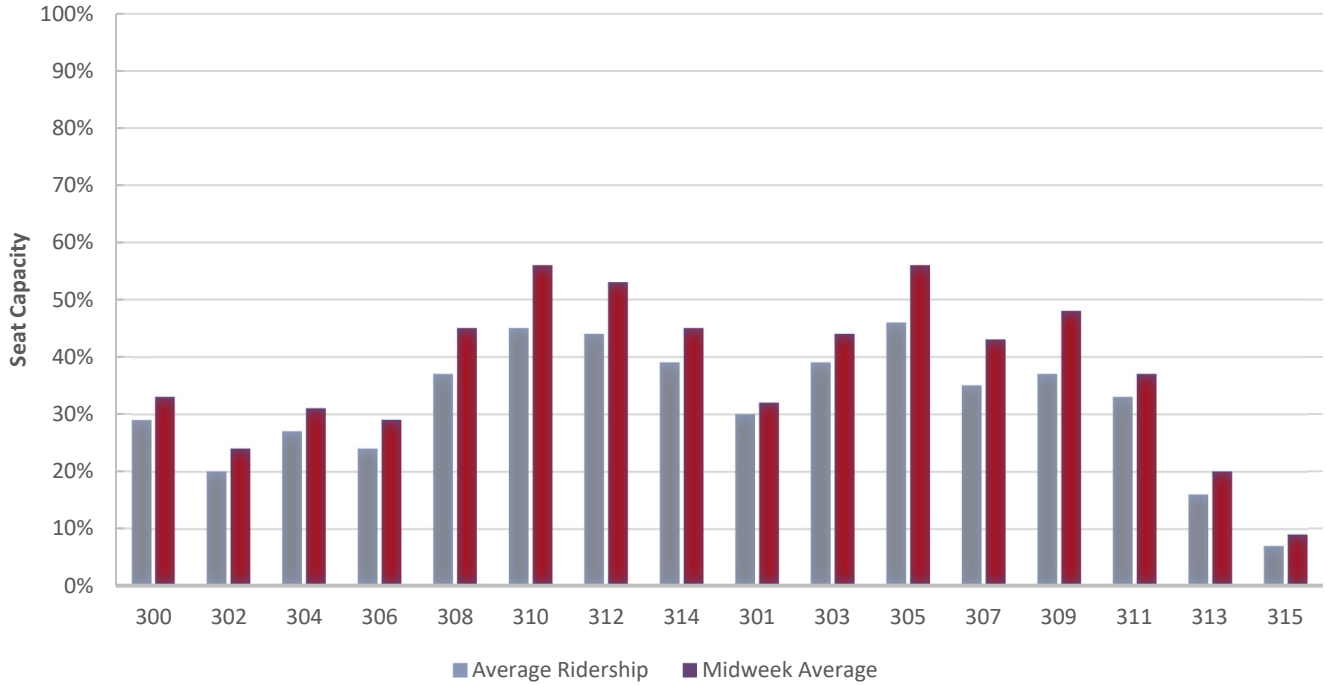
Reason for Dismissal	Occurrences
Passenger showed proof of a monthly ticket	0
One-time courtesy	0
Per the request of the conductor	0
Defective ticket	0
Per ops manager	0
Unique circumstances	0
Insufficient information	0
Lost and found ticket	0
Other	0
Total Waived	0

MONTHLY SUMMONSES COURT ACTION

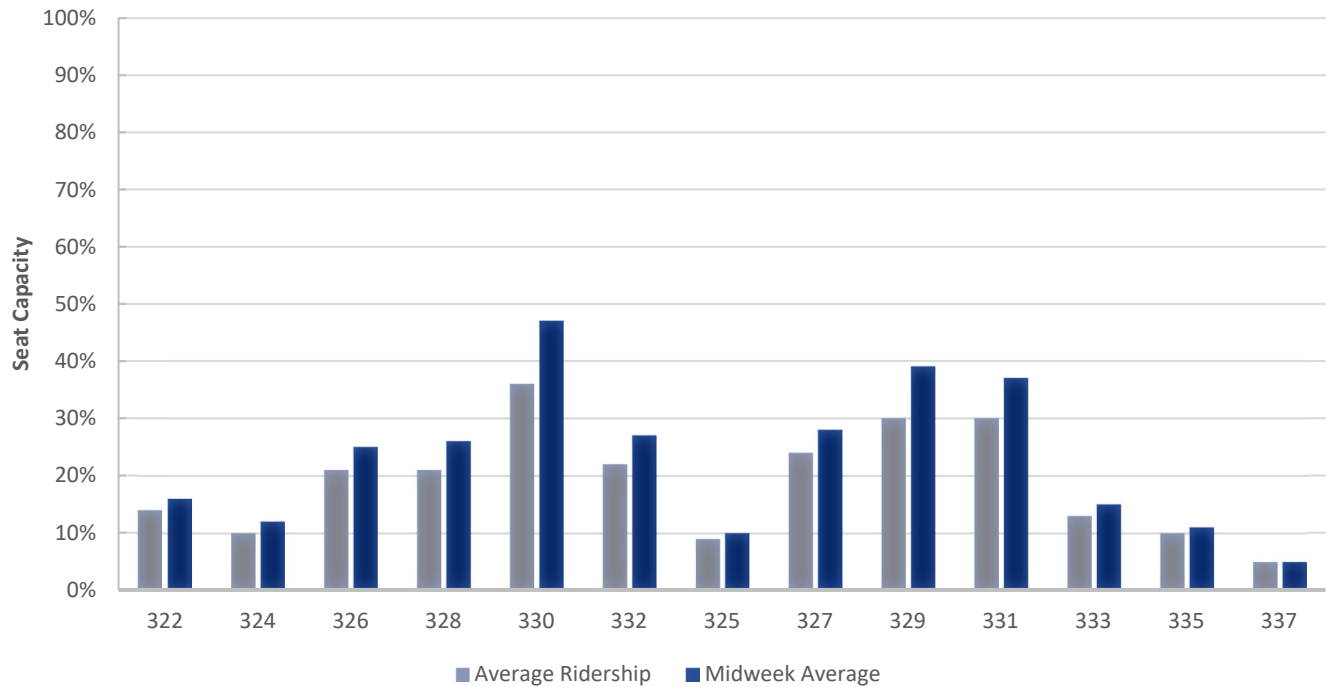


TRAIN UTILIZATION

FREDERICKSBURG LINE

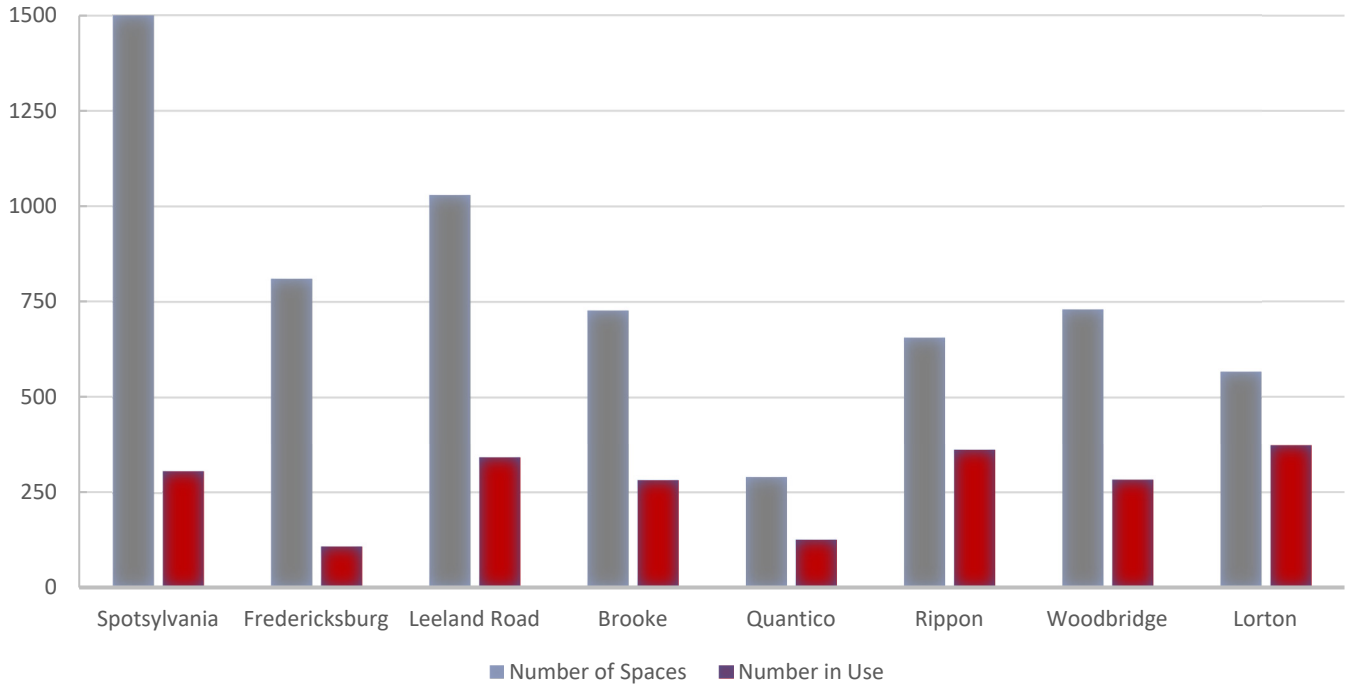


MANASSAS LINE

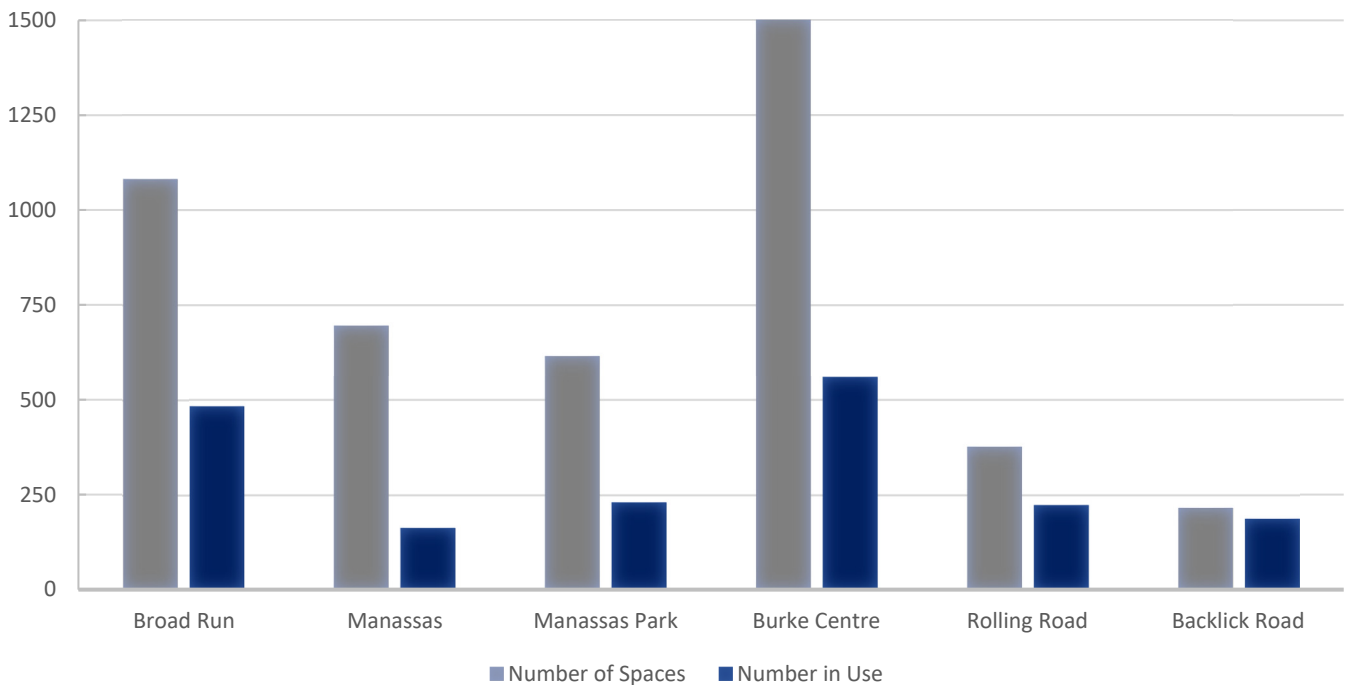


PARKING UTILIZATION

FREDERICKSBURG LINE



MANASSAS LINE



FACILITIES UPDATE

The following is a status update of VRE facilities projects.

Completed projects:

1. Replacement of platform tactile warning surface at Quantico station
2. Restriping of ADA-accessible parking space at Fredericksburg Lot D
3. Repairs to steel railings at Burke Centre station
4. Repairs to parking lot pavement at Manassas Park station



New tactile warning surface at Quantico

Projects scheduled to be completed this quarter:

1. Replacement of stair tower and pedestrian bridge logo signs at Woodbridge station
2. Repairs to electrical conduits at Brooke station
3. Replacement of parking lot LED light fixtures at Spotsylvania station
4. Hydrostatic testing of dry standpipe systems at Woodbridge and Manassas station parking garages
5. Replacement/installation of pathfinder signage for multiple stations



Restriped ADA parking at Fredericksburg

Projects scheduled to be initiated this quarter:

1. Minor repairs to concrete platform at Alexandria station
2. Replacement of LED lighting at Woodbridge station parking garage
3. Painting of warehouse and crew building exteriors at Crossroads MASF
4. Replacement of existing lighting with LED lighting at Manassas station parking garage
5. Repairs to steel railings at Broad Run station
6. Painting of Broad Run station

Ongoing projects:

1. Modernization of east elevator at Woodbridge station
2. Improvements to various elements of Quantico station
3. Improvements to various elements of Manassas Park station
4. Replacement of parking lot entrance signs at various stations

UPCOMING PROCUREMENTS

1. Locomotive AR-10 parts
2. State government relations services
3. Modernization of Woodbridge Station east elevator
4. Construction of Alexandria Station improvements
5. Broad Run and Crossroads security camera system power and network infrastructure upgrade
6. Locomotive master controllers
7. Passenger information and messaging system
8. Locomotive exterior painting services
9. Construction management services for the Crystal City Station improvements project
10. Construction management services for the Franconia-Springfield Station improvements project
11. Photography and videography services

CAPITAL PROJECTS UPDATE

Project Name	Project Description	Current Phase	Budget	Project Notes
Alexandria Station Improvements	Passenger safety will be improved by replacing an at-grade pedestrian track crossing with elevators to connect the two platforms. The elevators and the current and proposed stairs, will connect to the existing tunnel between the two platforms. Adjustments to platform elevation will eliminate the need for step-boxes to access VRE and Amtrak trains. The center platform will be widened and lengthened to accommodate trains on both tracks.	Final Design	\$ 37,288,433.00	Review of the King and Commonwealth bridge replacement designs for unification with the Alexandria Station Improvements designs complete. Execution of unification of these designs to begin later this month. (July) Task order issued for the unification of the King and Commonwealth bridge replacement designs with the Alexandria Station Improvement designs. Designer will unifying those projects under a single set of project documents. (June)
Backlick Road Station Improvements	A 290-foot platform extension will accommodate eight-car trains thereby eliminating passenger movement within railcars and decreasing boarding and off-boarding time. Rehabilitation and repair of the existing platform and canopy, and upgrades of the lighting and communication systems are included.	Development	\$ 8,454,206.00	A task order to advance an environmental study and engineering design is being drafted. (July/June)
Broad Run Expansion	To accommodate forecasted ridership growth and increase service reliability, improvements are needed at both the Maintenance and Storage Facility (MSF) and station. An enlarged MSF can store longer trains and additional equipment. That requires shifting the existing platform and adding a pedestrian tunnel between the platform and existing and proposed parking lots. A second, 600-space lot and third main track will be constructed.	Final Design	\$ 139,381,862.00	Advancing design to 90% level. Targeted submission of the package for review is end of September. (July) Advancing to 90% design based on recent value engineering efforts. Stakeholder coordination on property and permitting to continue in the coming months. (June)
Crossroads MSF Employee Parking	Design and construction of a permanent employee parking lot at VRE Crossroads Yard.	Final Design	\$ 7,365,765.00	County is reviewing the latest special use permit resubmission package. Anticipate receiving a date from soon for Planning Commission review meeting. (July) Special use permit package was resubmitted to address remaining comments. Planning Committee review meeting should be scheduled sometime in July. (June)
Crystal City Station Improvements	Improved station access and service reliability will result from a new station. The platform at the relocated station will allow for the simultaneous boarding of two full-length trains. The station's design will accommodate a future pedestrian/bicycle connection between the station and the airport.	Development	\$ 68,900,900.00	Station advancing to 90% design; anticipated Q4 of 2024. Coordination ongoing with adjacent project stakeholders to clarify design intent of Phase 2 (201 I Crystal Drive entrance). (July) Station design advancing to 90%. (June)

- continued next page -

CAPITAL PROJECTS UPDATE

Project Name	Project Description	Current Phase	Budget	Project Notes
Franconia-Springfield Station Improvements	Extended platforms will be able to accommodate eight-car trains, eliminating the need for passengers near the rear to move to a different railcar when disembarking. Enhanced passenger safety and reduced station dwell times will result. The longer platforms will increase operational flexibility and capacity. The design will allow for a future third mainline track.	Final Design	\$ 25,351,100.00	90% review cycle for the pedestrian underpass is complete. Designer working to unify previously developed platform extension design and more recently developed pedestrian underpass design into a single cohesive set of project documents. (July/June)
Fredericksburg Station Rehabilitation	The rehabilitation of platforms, stairs and bridges will improve passenger safety and better accommodate the boarding and disembarking of riders from VRE and Amtrak trains. New stairs will allow passengers to move between the platform and a parking lot without crossing the street at grade level. New signage, sidewalks, lighting and paint are included, as is installation of a low-clearance warning sign to a bridge that has experienced numerous vehicle strikes.	Construction	\$ 11,480,622.00	Substantial completion achieved April 2024. (July/June)
HQ Office Renovations	The project will improve employee safety and security and maximize workspace efficiency at VRE Headquarters, and will include modifications to kitchen, supply room, mail room, bathroom/shower, office and cubicle areas in the north and south wings. The east wing will be modified to include additional offices.	Construction	\$ 250,000.00	Planning glass wall-enclosed work/meeting spaces adjacent to communications room. Researching available systems for review with upper management. (July/June)
Leeland Road Parking Improvements	This project will expand the surface parking lot at the Leeland Road station by approximately 225 spaces to accommodate future demand.	Development	\$ 12,044,433.00	The project is funded through Virginia SMART SCALE. Funding is allocated for FY20 and 22. A funding agreement is pending. (May/June)
Leeland Road Station Improvements	Design and construction of a platform extension to accommodate full-length VRE trains.	Development	\$ 10,361,037.00	VRE has reengaged this project and returned it to the CIP budget for future years. Project schedule updates pending input from various stakeholders. (May/June)
L'Enfant Track and Station Improvements	Expansion of the VRE L'Enfant Station to provide two platform edges and serve full-length trains. Add a new mainline track between LE and VA interlockings.	Development	\$ 110,857,683.00	Coordination ongoing with DCSHPO, DC Office of Planning/Archaeologist, FTA/sound and vibration, station design with DOB. Utility and geotechnical survey are ontrack to be completed by end of July/early August. (July) A kick-off meeting was held with the PMC consultant (June)

- continued next page -

CAPITAL PROJECTS UPDATE

Project Name	Project Description	Current Phase	Budget	Project Notes
Lifecycle Overhaul and Upgrade (LOU) Facility	Featuring 33,000 square feet of maintenance space, the LOU will allow VRE to cost-effectively maintain rolling stock, as well as systems and components, in a state of good repair. It will optimize maintenance and reduce costs by allowing the in-house replacement of items before they fail. The LOU will house two tracks that can hold up to four cars at one time and be equipped with a drop table and wheel truing machine.	Construction	\$ 52,783,632.00	Closeout documents to be provided to the county for the erosion and sediment control bond release pending final certification of the new pond BMP from the EOR. (July) Working on final certification of pond BMP to finalize E&SC paperwork for bond release. New car pull ropes to be delivered later this month. (June)
Manassas Park Parking Expansion	A new garage will nearly double the 600 spaces currently available in the existing surface lot. A pedestrian bridge will provide grade-separated access to the existing platform and lot. The VRE station and garage are an integral part of the City Center Redevelopment District, the proposed transit-accessible high-density mixed-use town center of Manassas Park.	Construction	\$ 34,662,764.00	Erection of precast elements of garage completed on 7/8/24. Excavation for foundations of stair tower and platform modifications along NS track to commence mid-July. (July) Erection of precast garage anticipated to be complete by mid-July. On the platform side, piles and caps for the new stair tower and associated platform have been placed and formwork removed. (June)
Manassas Station Improvements	The project expands the VRE Manassas Station platform to serve full length trains and enhances pedestrian access to the station. Alternatives to increase the platform length to enable boarding and alighting from all passenger cars will be evaluated.	Development	\$ 9,125,000.00	A task order to advance environmental study and engineering design is being drafted. (July) This project is funded with I-66 OTB funding. Initiation of project planning pending completion of a Force Account Addendum with Norfolk Southern Railway. (May/June)
New York Avenue Midday Storage Facility	This new facility will store trains currently located in Amtrak's Ivy City coach yard, as Amtrak now has need for the storage tracks. The New York Avenue site, which is proximate to Washington Union Station, will be able to accommodate additional VRE trains.	Development	\$ 137,362,557.00	Recent survey field survey efforts are complete. EOR will advance design once files are transmitted by land surveyor. (July) Field survey efforts are underway as coordination continues with Amtrak on our design phase agreement. (June)
Potomac Shores Station	This new station, in a master-planned community in Prince William County, is being funded, designed, and constructed by the developer of Potomac Shores in consultation with VRE and other stakeholders. The station will be just a short walk from the town center. A new side platform will be constructed which is designed to be converted into an island platform in the future when the 3rd track is added to corridor operations.	Final Design	\$ -	Construction of the shared use garage is ongoing. Construction includes casting the three pedestrian bridge support concrete foundation piers that are adjacent to the garage building. (July/June)

- continued next page -

CAPITAL PROJECTS UPDATE

Project Name	Project Description	Current Phase	Budget	Project Notes
Quantico Station Improvements	Service and safety will be enhanced through the construction of a new center platform, ADA-compliant pedestrian bridges, existing platform extension, and third track. These improvements will allow the station to accommodate additional passengers and more frequent and longer trains and operations flexibility with three boardable platform edges.	Construction	\$ 25,573,060.00	Construction in the station waiting area and restrooms underway. Anticipate completion within the month. (July) Site/civil/drainage coordinating with CSX track schedule. Substantial Completion anticipated April '24. Tower/ped bridge/utilities completion on going. (June)
Woodbridge Station Improvements	Expanded platforms will allow passengers to access trains from all station tracks.	Development	\$ 2,740,618.00	The scope and schedule for this project is being coordinated with the commonwealth's Transforming Rail in Virginia initiative, post-Phase 2 project. (July/June)

For more information about VRE capital projects, visit <https://projects.vre.org/list>

This page intentionally left blank



VIRGINIA RAILWAY EXPRESS

1500 KING STREET, SUITE 202 • ALEXANDRIA, VA 22314 • 703.684.1001

VRE.ORG

