

# Welcome to the Public Open House!

---

L'Enfant Station and Fourth  
Track Improvements Project

3:30 pm to 7:00 pm

*Provide comments today!*

*For more details and future project updates,  
scan QR code or visit [www.vre.org](http://www.vre.org).*





# Why This Project

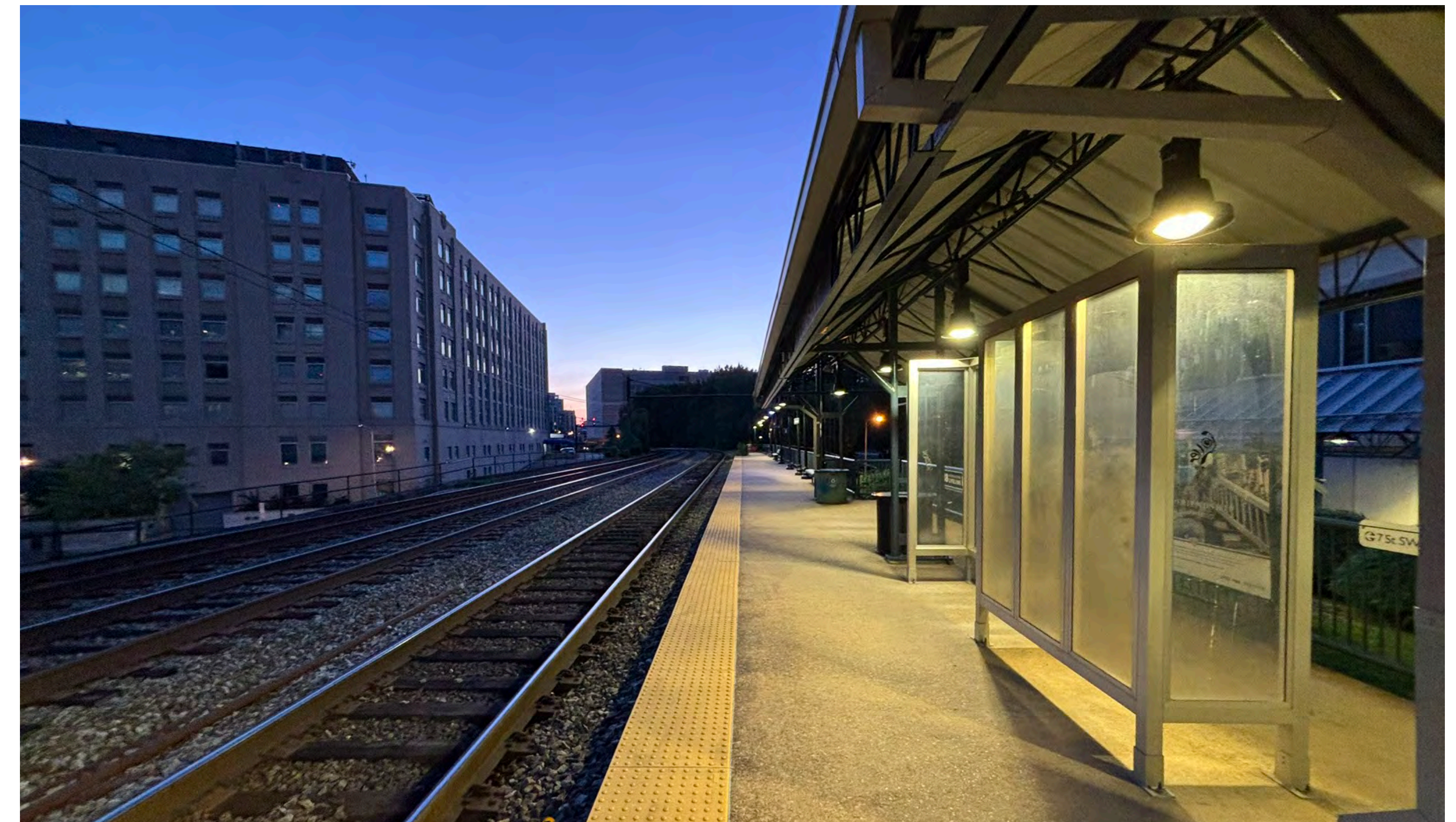


## Existing Conditions and Constraints

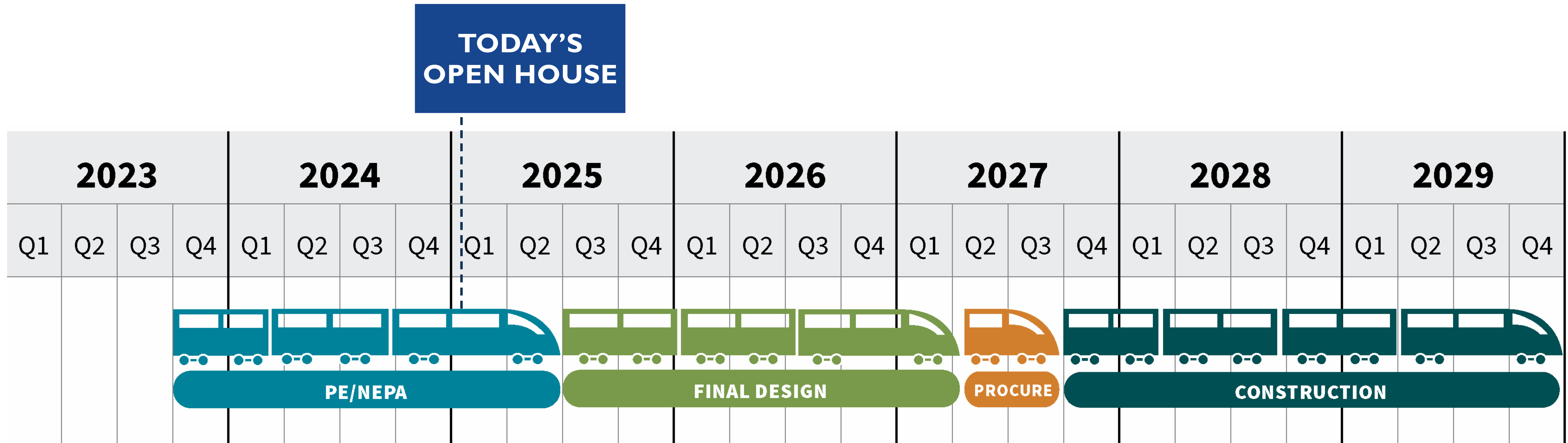
- 3 existing tracks, shared by freight and passenger trains
- Station serves 1 train/direction at a time
- Platform too short for full 8-car train boarding
- Passenger crowding
- Dense urban area with heavily used infrastructure

## Project Goals

- Increase rail capacity and reduce conflict between passenger and freight trains
- Allow 2 trains/directions at a time
- Accommodate longer trains and reduce crowding
- Remain within existing railroad right-of-way wherever possible
- Improve station accessibility with an elevator at each entrance and integrate the station with the surrounding community



# Project Timeline



## Next Steps

- Completion of NEPA Environmental Review and Preliminary Engineering: mid-2025
- Final Design: expected to begin 2nd half of 2025
- Construction: anticipated 2027 – 2029
- ▶ *Public engagement and stakeholder coordination will continue throughout the NEPA process and into final design.*
- ▶ *VRE is exploring construction options which could include alternative project delivery methods.*

# 7th Street SW Entrance

EXISTING CONDITION



PROPOSED CONDITION



PROPOSED CONDITION



600 Maryland Ave loading area  
(Smithsonian office building)

*\*Renderings above are illustrative; future appearance or design elements may change in final design.*

- Removes existing VRE station stairs and ADA accessible ramp
- Connects street entrance to L'Enfant station platform through a proposed tunnel with elevator and stairs

- Expands existing bridge to the north to fit the fourth track
- Will match bridge design and appearance to the existing bridge

# 6th Street SW Entrance

## EXISTING CONDITION



600 Maryland Ave loading area  
(Smithsonian office building)

## PROPOSED CONDITION



## PROPOSED CONDITION



- Removes existing VRE station stairs
- Connects street entrance to L'Enfant station platform through a proposed tunnel with elevator and stairs
- Replaces existing bridge with new bridge to support expanded platform and fourth track

## PROPOSED CONDITION



*\*Renderings above are illustrative; future appearance or design elements may change in final design.*

# Station Platform



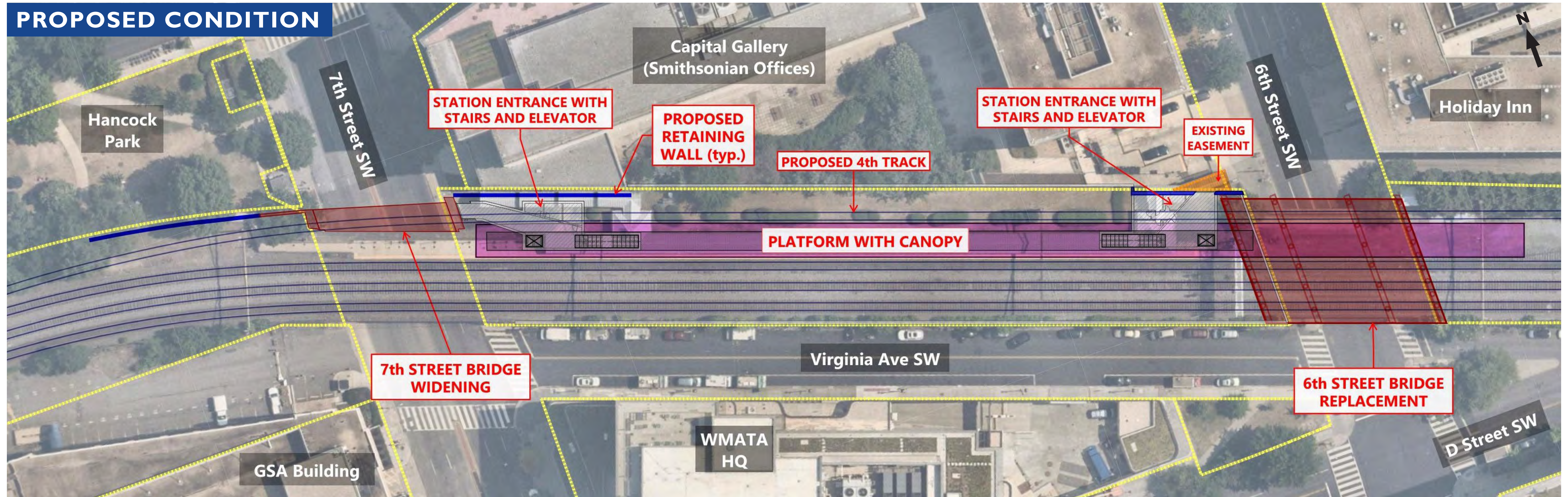
*\*Renderings above are illustrative; future appearance or design elements may change in final design.*

- Replaces existing side platform with center platform
- Connects platform to street entrances via elevators and stairs at either end
- Features benches, lighting, security cameras, and canopy with windowed skylights over stairs

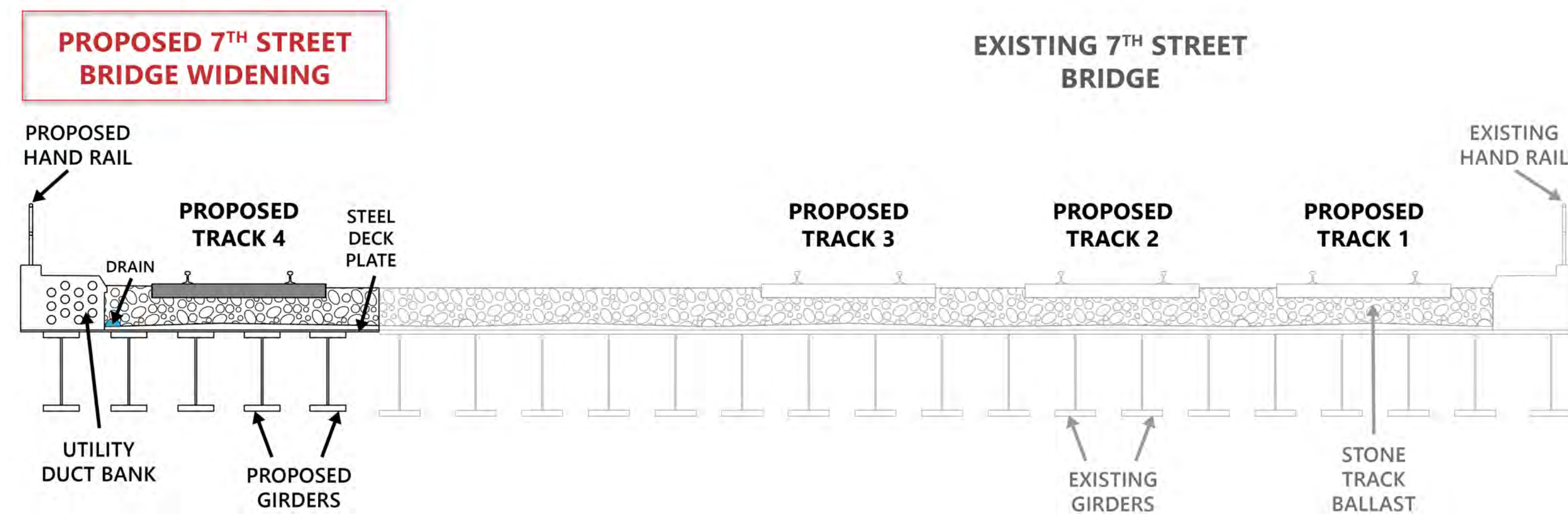


# Station and Track Design Details

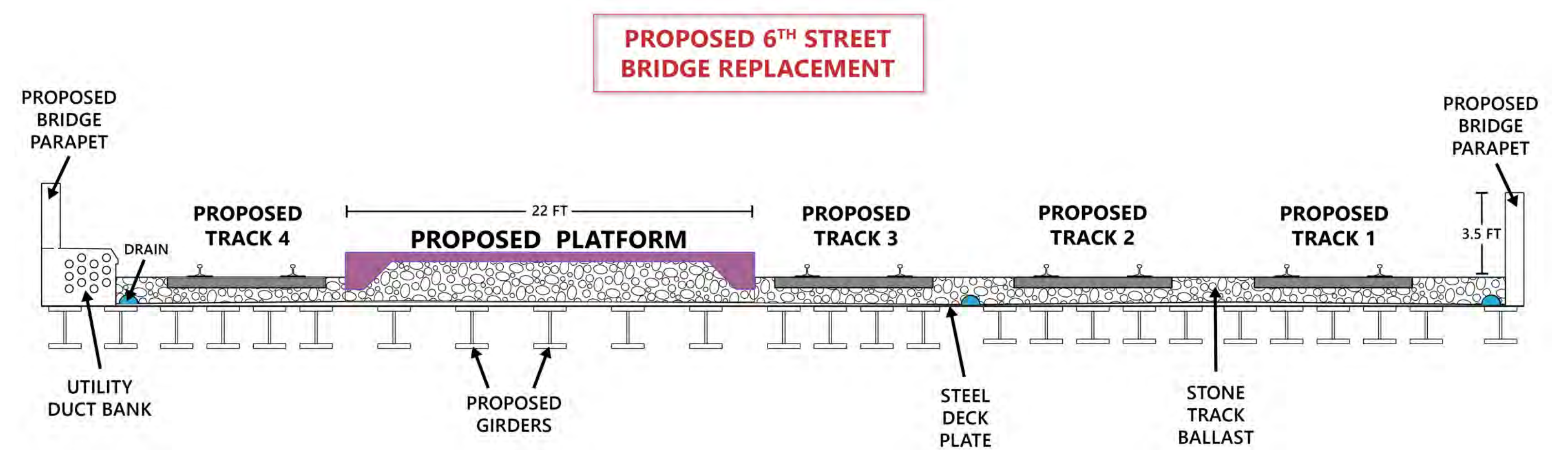
## PROPOSED CONDITION



## CROSS-SECTION: 7<sup>TH</sup> ST SW BRIDGE



## CROSS-SECTION: 6<sup>TH</sup> ST SW BRIDGE

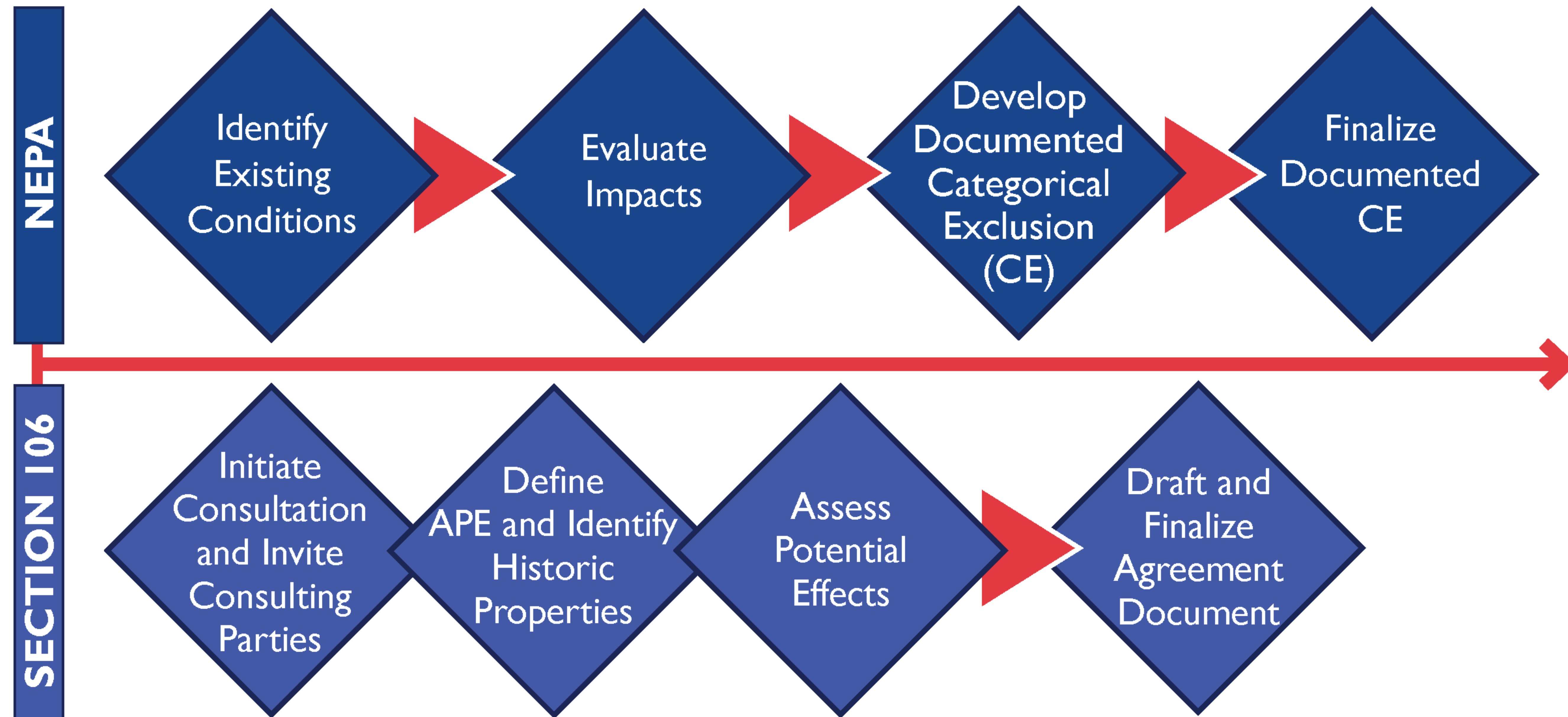




# NEPA & Section 106 Process

The National Environmental Policy Act of 1969 (**NEPA**) requires assessment of the environmental impacts of proposed Federal actions before making final decisions on location, design, and construction.

**Section 106** of the National Historic Preservation Act requires consultation with State Historic Preservation Offices, Tribes, and other parties in determining the potential effects of a project on historic properties within a defined area of potential effects (APE).

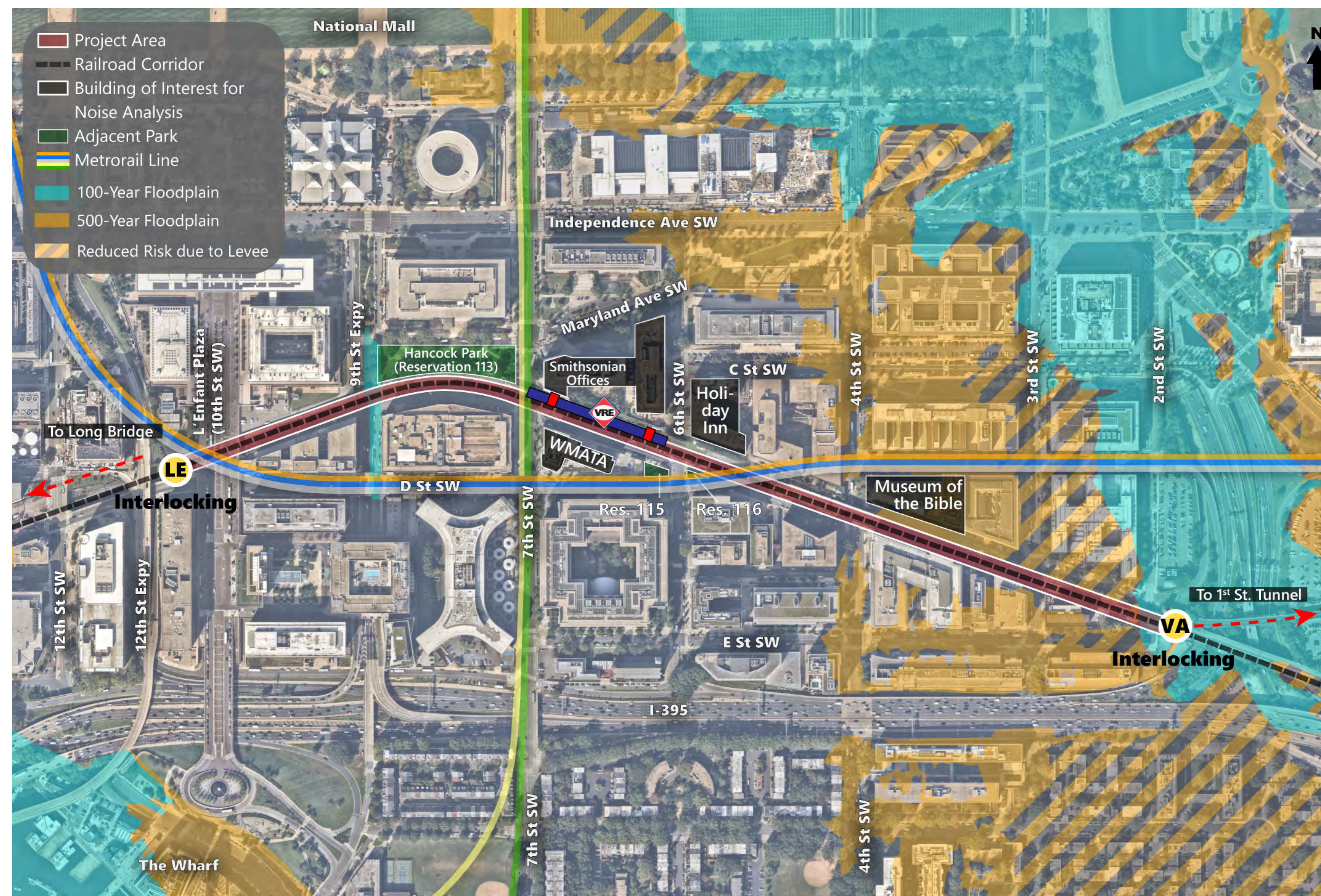


# Environmental Resources

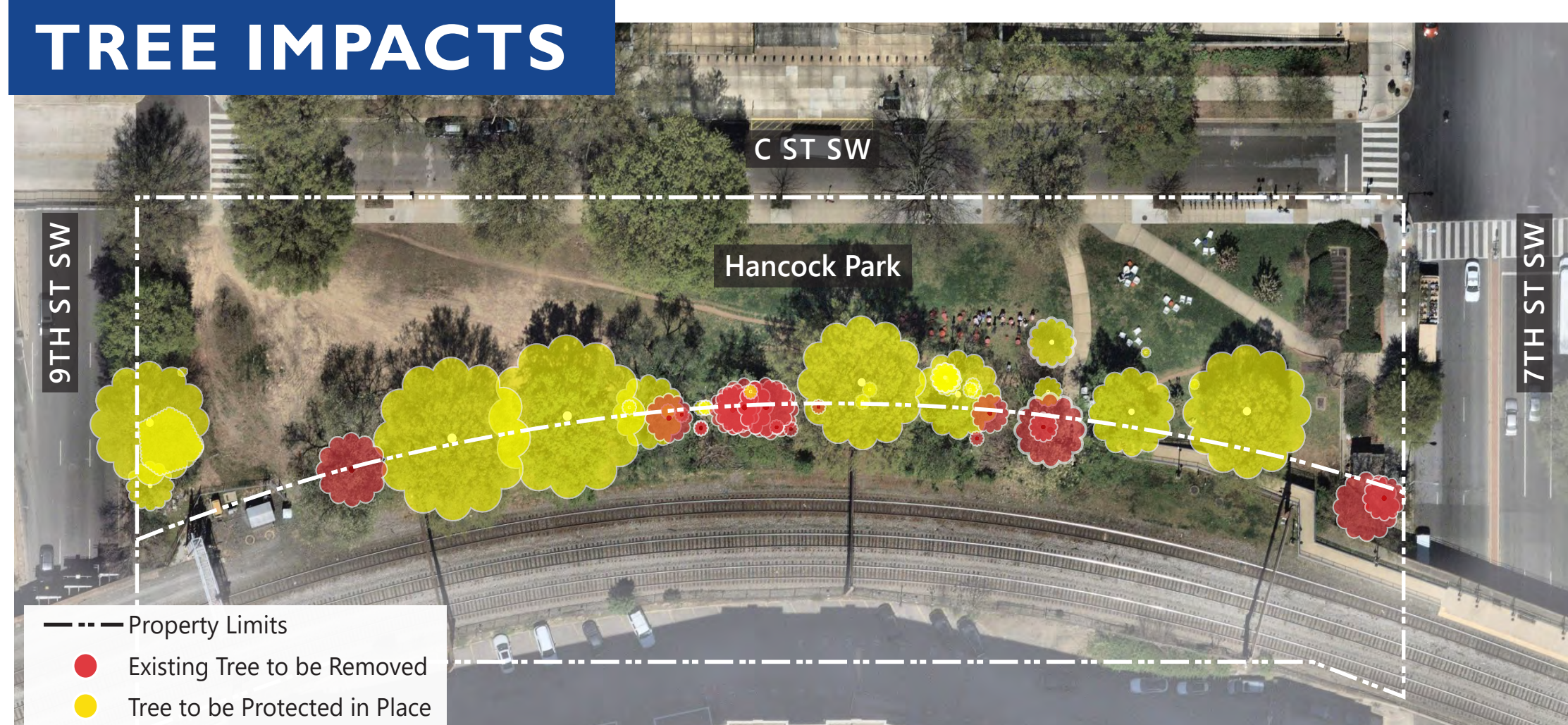
The National Environmental Policy Act (NEPA) of 1969 requires assessment of the environmental impacts of proposed Federal actions before making final decisions on location, design, and construction.

## Resources of Interest:

- Noise and Vibration
- Traffic and Transportation
- Parks and Recreation Areas
- Aesthetics/Visual Quality
- Historic Resources (Section 106)



## TREE IMPACTS

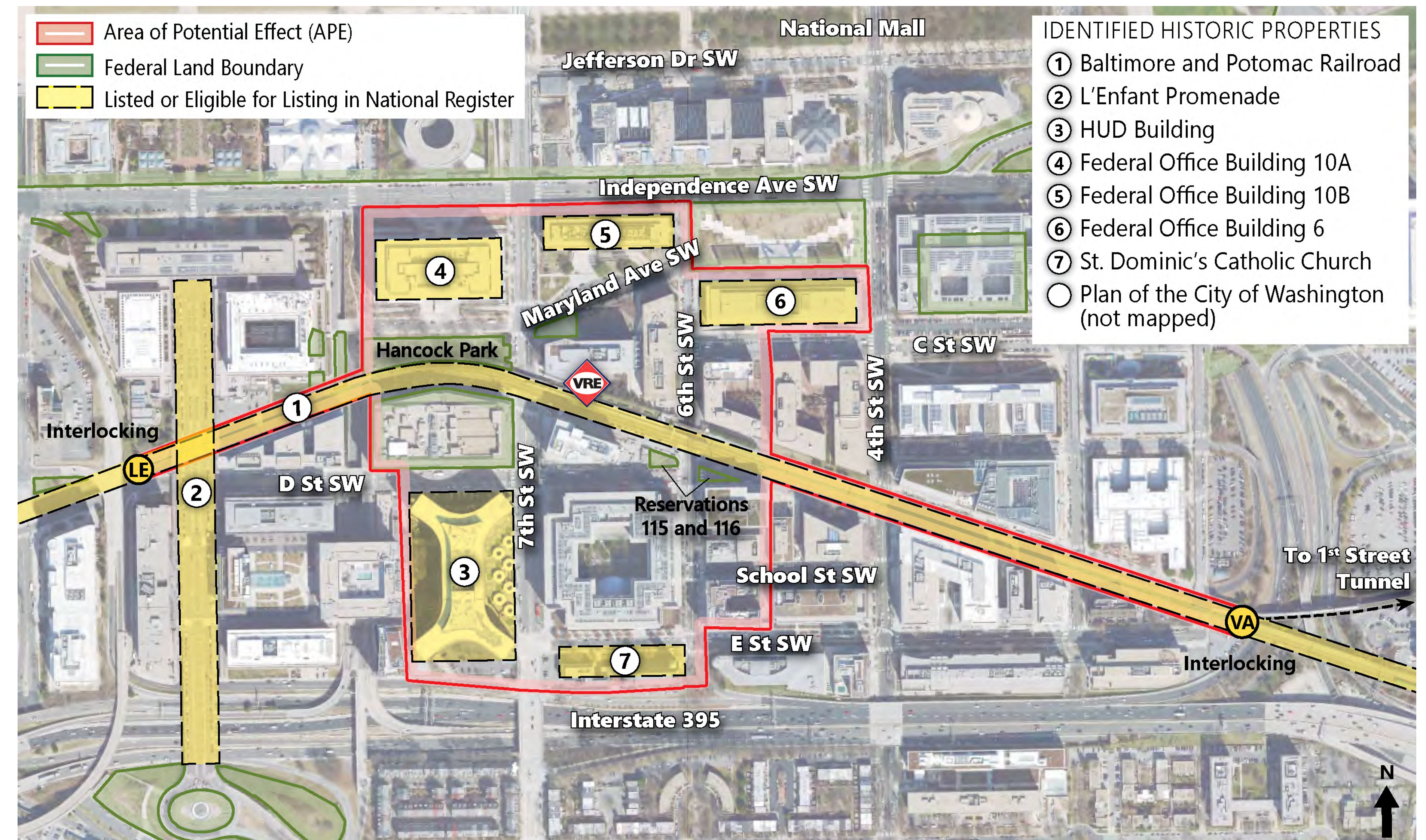


\*All trees to be removed are within railroad right-of-way.

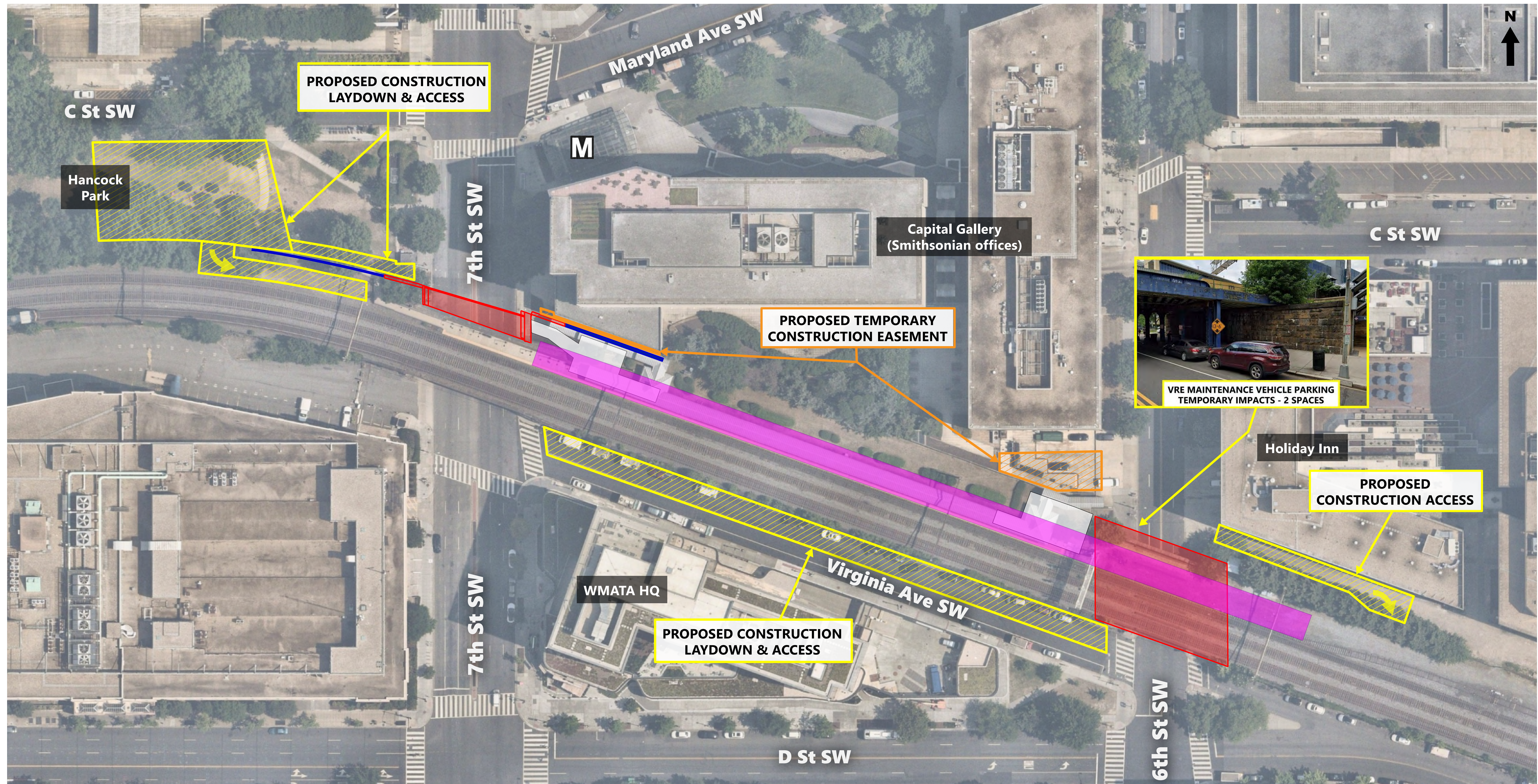
# Section 106 Summary

Section 106 of the National Historic Preservation Act requires consultation with State Historic Preservation Offices, Tribes, and other parties in determining the potential effects of a project on historic properties.

- Identified proposed Area of Potential Effect (APE) and historic properties near L'Enfant Station
- Determined eligibility of 2 properties:
  - ▶ Baltimore & Potomac Railroad - Recommended Eligible
  - ▶ American Road Builders Association Building - Recommended not eligible
- Continuing coordination with the DC Historic Preservation Office and Consulting Parties



# Construction Staging/Access



Hatched construction laydown/access area shown on Virginia Avenue SW to be coordinated with DDOT and adjacent property owners/stakeholders. Limits shown are preliminary, with any temporary street closures to be minimized where possible.

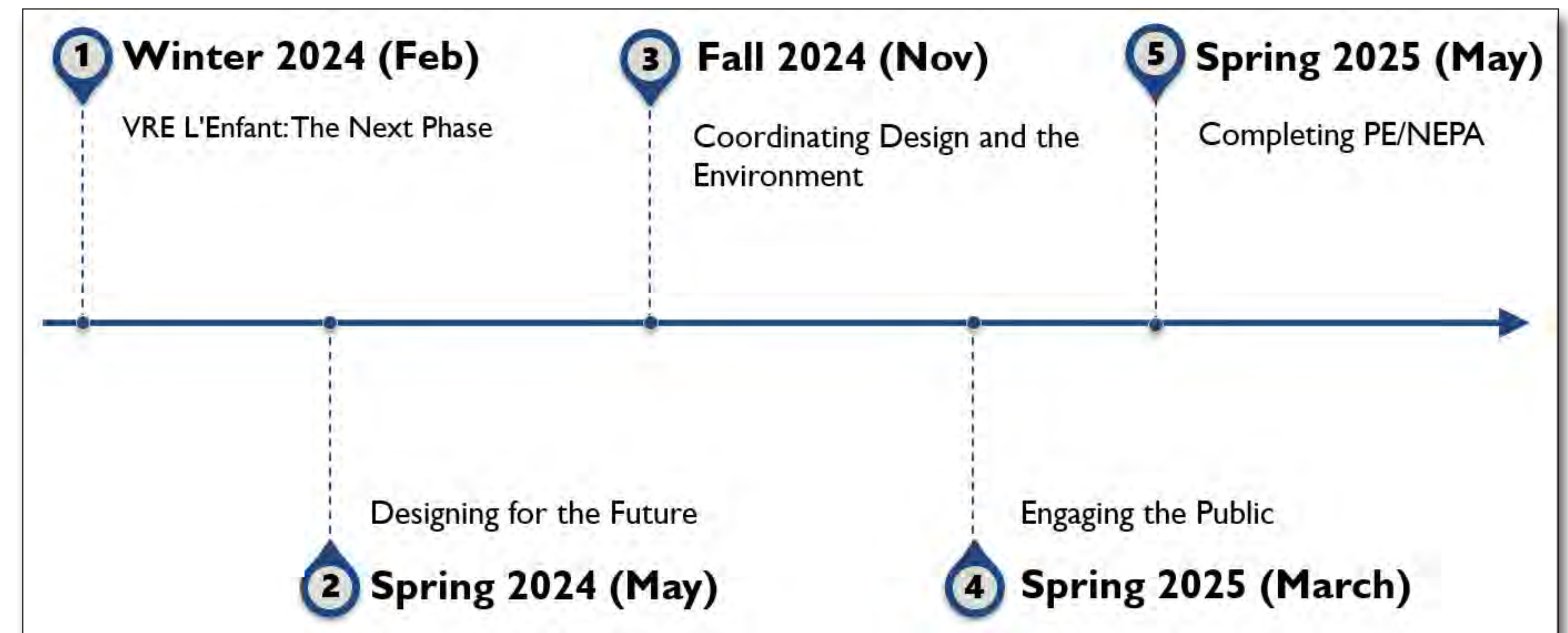
# Stakeholder Engagement

## Working Group Members

- Advisory Neighborhood Commission 6D
- Amtrak
- Commission of Fine Arts
- Committee of 100 on the Federal City
- CSXT
- DC Office of Planning
- Virginia Department of Rail and Public Transportation
- District Department of Energy and Environment
- District Department of Transportation
- DC Historic Preservation Office
- Federal City Council
- Federal Railroad Administration
- Federal Transit Administration
- General Services Administration
- Greater Washington Partnership
- National Capital Planning Commission
- National Park Service

- NPS National Mall and Memorial Parks
- Northern Virginia Transportation Commission
- Potomac and Rappahannock Transportation Commission
- Smithsonian Institution
- Southwest Business Improvement District
- Southwest Neighborhood Assembly
- Virginia Passenger Rail Authority
- Washington Metropolitan Area Transit Authority
- Nearby property owners

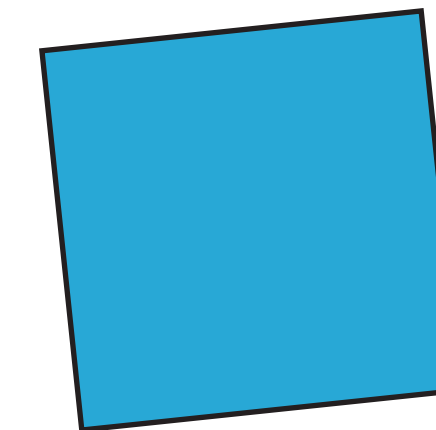
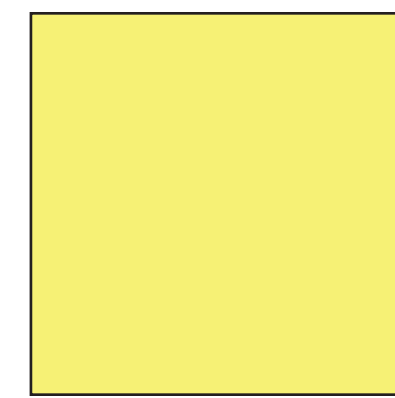
## WORKING GROUP MEETINGS



# How To Give Feedback

**LEAVE A COMMENT  
HERE TODAY!**

Share your questions, ideas, and concerns today! You can talk to our staff, fill out a comment card, or add a sticky note below.



Email comments to:  
[dshikurye@vre.org](mailto:dshikurye@vre.org)

...Or mail comments to:  
Virginia Railway Express (VRE)  
Attention: LEF/Dagmawie Shikurye  
1500 King St., Suite 202  
Alexandria, VA 22314

For more details and future project updates, scan QR code or visit:  
[www.vre.org/projects/details/?ProjectId=21](http://www.vre.org/projects/details/?ProjectId=21)

